



Snowshoeing through the years

February 15, 2025

James (JD) DeMerse



*Products as rugged and beautiful
as the places they take you*

Land Acknowledgement

We are in the Ojibwa (Chippewa) homelands and ceded-territory established by the Treaty of 1842. The Ojibwa, or Anishinabe, have been working with the nature of the Great Lakes, including the making of snowshoes, for approximately 1500 years.



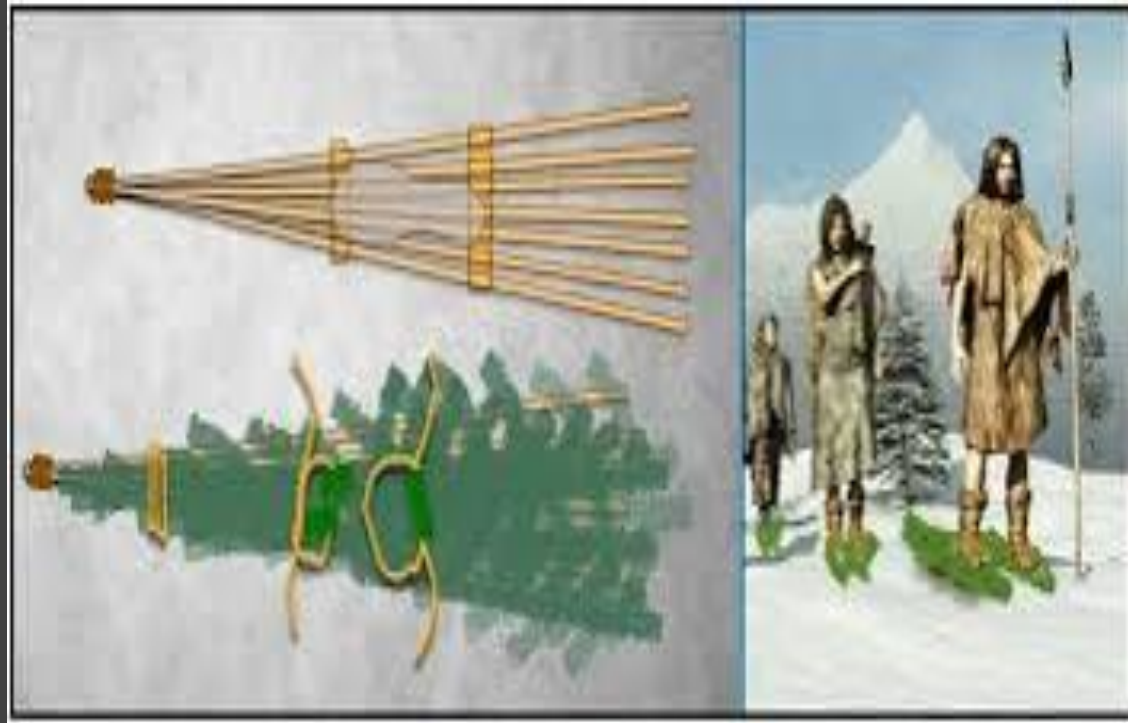
*Products as rugged and beautiful
as the places they take you*

From Pre-History to the Technological Age

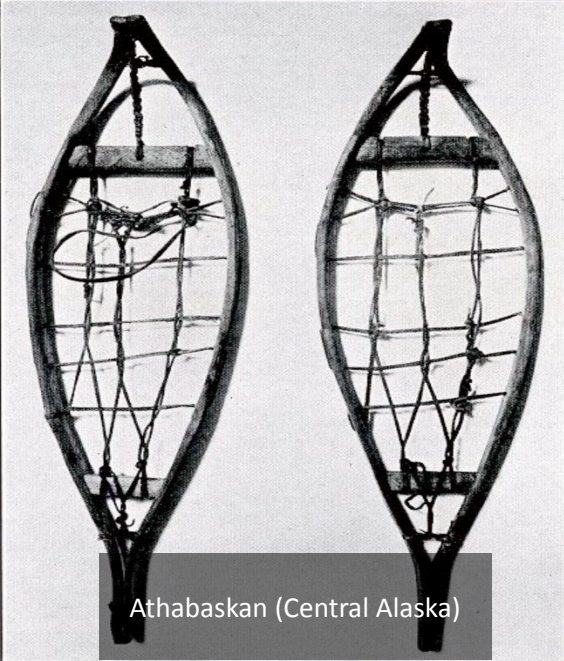


*Products as rugged and beautiful
as the places they take you*

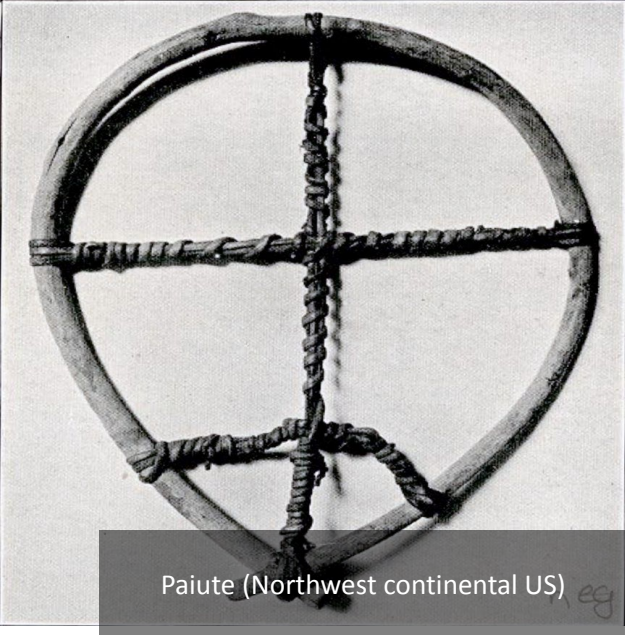
First Snowshoes



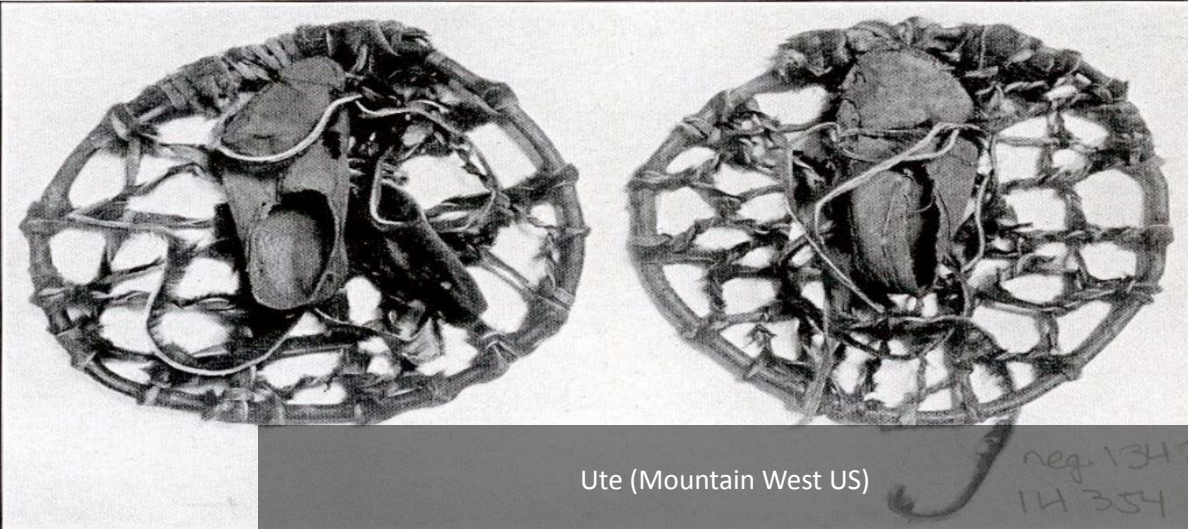
Early Innovations
based on regional
materials, terrain
and snow
conditions



Athabaskan (Central Alaska)



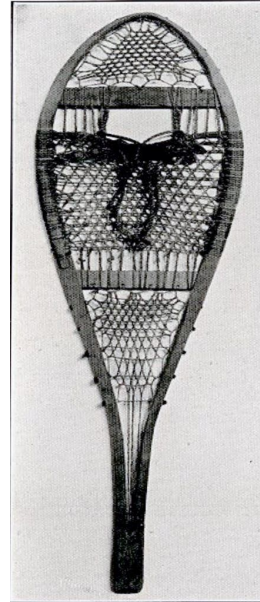
Paiute (Northwest continental US)



Ute (Mountain West US)

*Products as rugged and beautiful
as the places they take you*

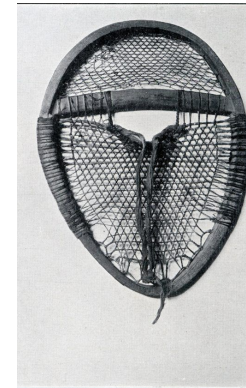
Optimization of designs, materials and methods



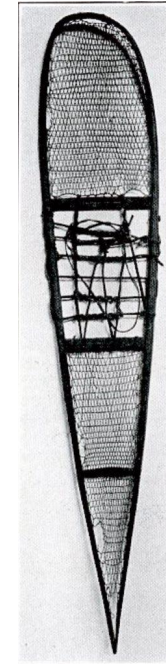
Penobscot
(Northeast US)



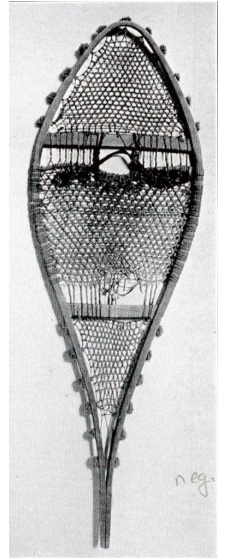
Ojibwe
(Upper Great Lakes)



Innu
(Quebec and Labrador)

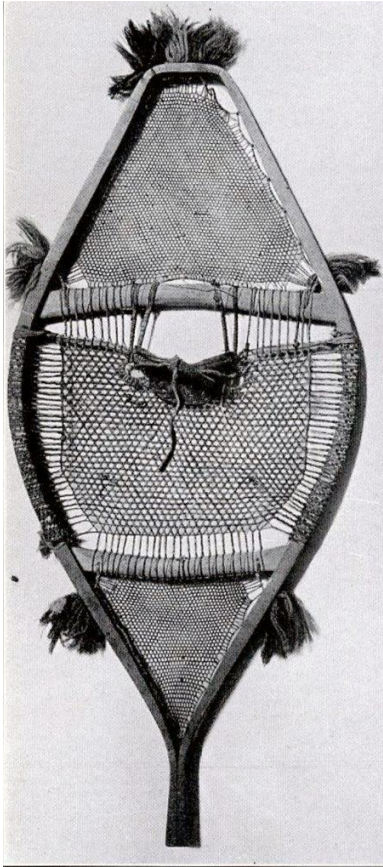


Athabascan
(Central Alaskan)

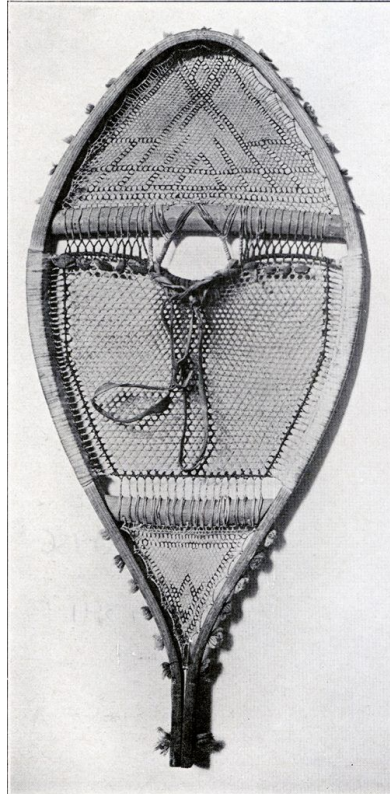


Huron
(Eastern Great Lakes)

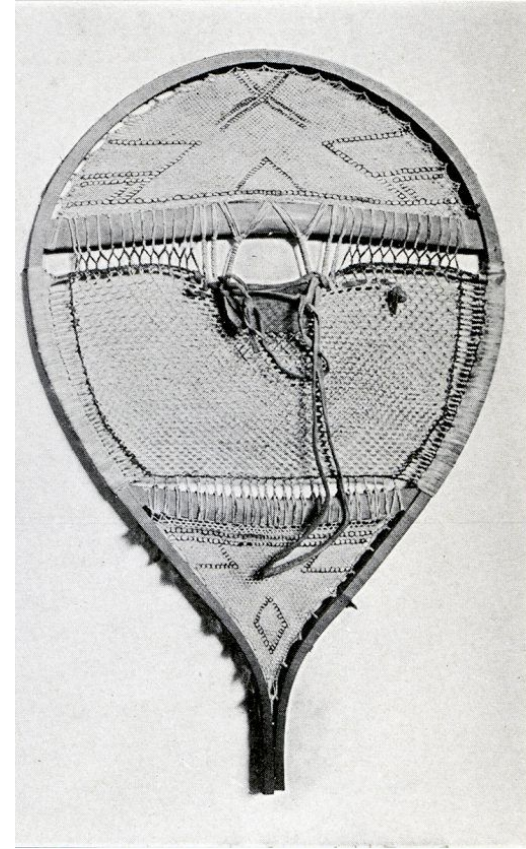
Function meets art



Tetes de Boule of Quebec



Innu



*Products as rugged and beautiful
as the places they take you*

The Voyageurs 1600-1860



*Products as rugged and beautiful
as the places they take you*



Snowshoe Clubs

*A measure of social status and winter parties from
the 1840's to the 1950's*



*Products as rugged and beautiful
as the places they take you*



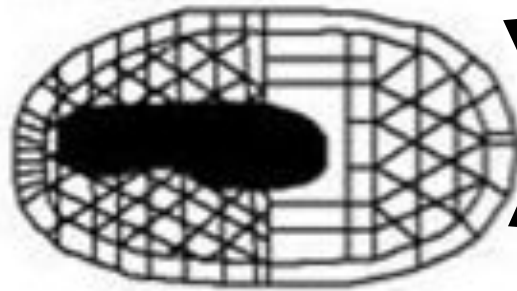
*Products as rugged and beautiful
as the places they take you*

1950's

*Advancements
in methods
allow
transition
from survival
to leisure to
adventuring*

Profile Innovations

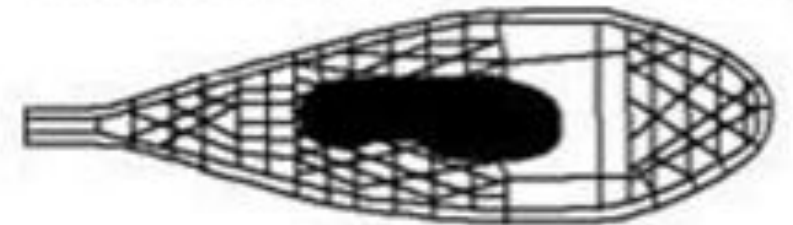
Bearpaw



Green Mountain Bearpaw



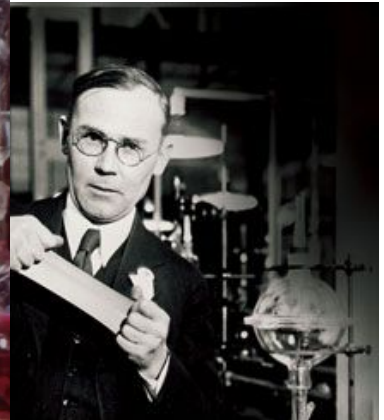
Westover Modified Bearpaw



1960s

*Advancements
in materials
broaden
applications of
traditional
snowshoes.*

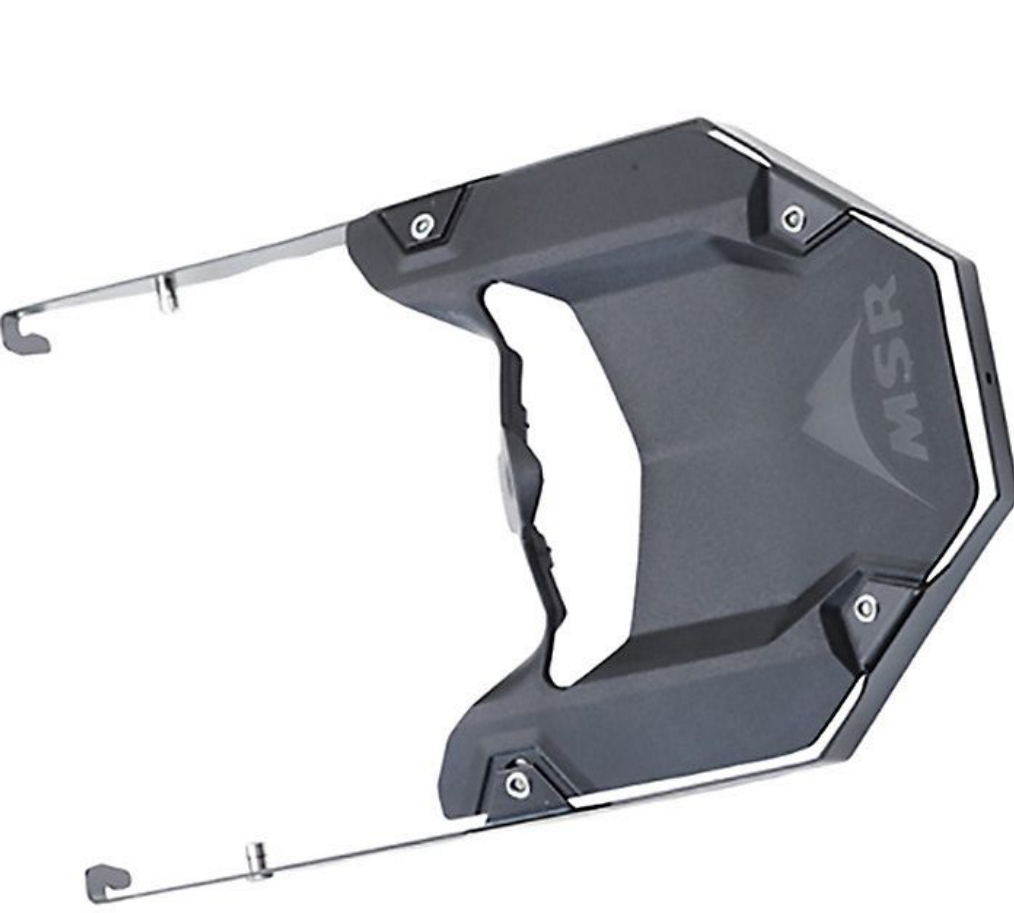
Material Innovations





Into the technological age 1972-Today





Material Choices and Applications Continue to Expand and Enable Innovation.

*Products as rugged and beautiful
as the places they take you*

Historical and Modern Connections to Michigan's Upper Peninsula



*Products as rugged and beautiful
as the places they take you*

Bishop Baraga

Founded a mission at L'Anse in 1843 and earned the nickname "the Snowshoe Priest" traveling hundreds of miles each year on snowshoes to conduct mission work.



*Products as rugged and beautiful
as the places they take you*

Clarence
Iverson

*Keeping the
Tradition Alive*





*Products as rugged and beautiful
as the places they take you*

How They are Made



*Products as rugged and beautiful
as the places they take you*



*Products as rugged and beautiful
as the places they take you*

Steam Bending



Prepping for the Dry Kiln



*Products as rugged and beautiful
as the places they take you*

On to the Dip Room





Laced in:

*natural full
grain rawhide*

or

*synthetic
“neoprene”*

Applications and Uses



*Products as rugged and beautiful
as the places they take you*



*Products as rugged and beautiful
as the places they take you*



*Products as rugged and beautiful
as the places they take you*



*Products as rugged and beautiful
as the places they take you*



Proven to get you where you want to go,
as the places they take you



*Products as rugged and beautiful
as the places they take you*